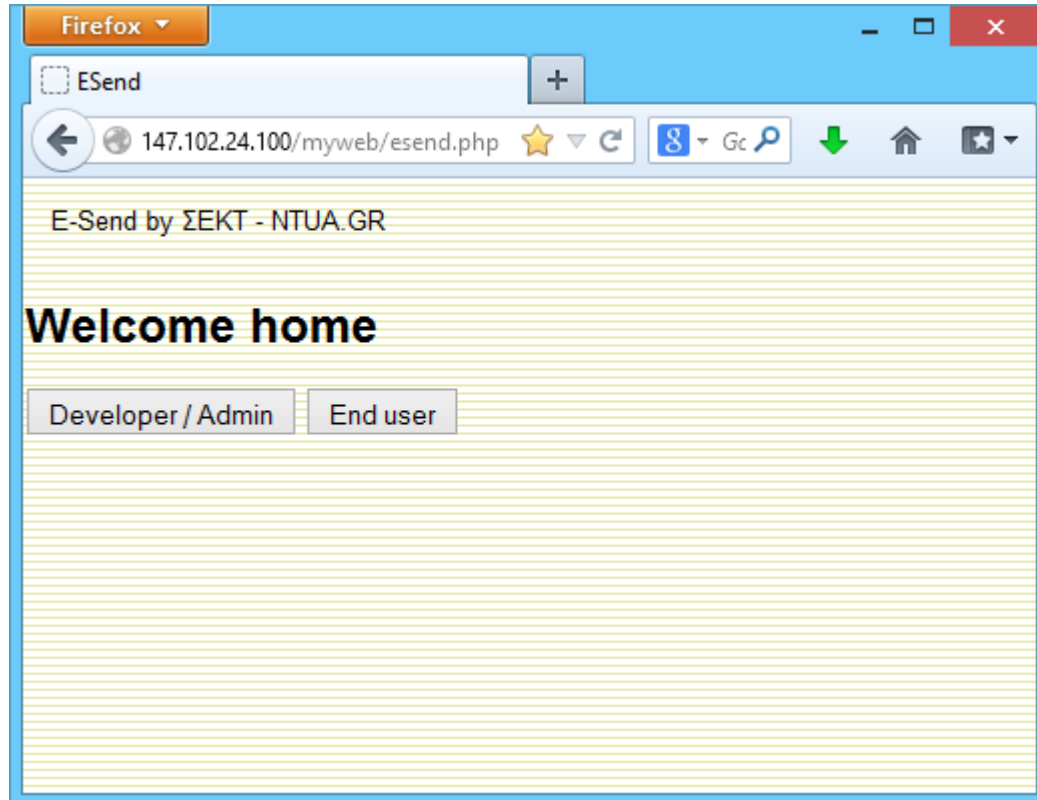


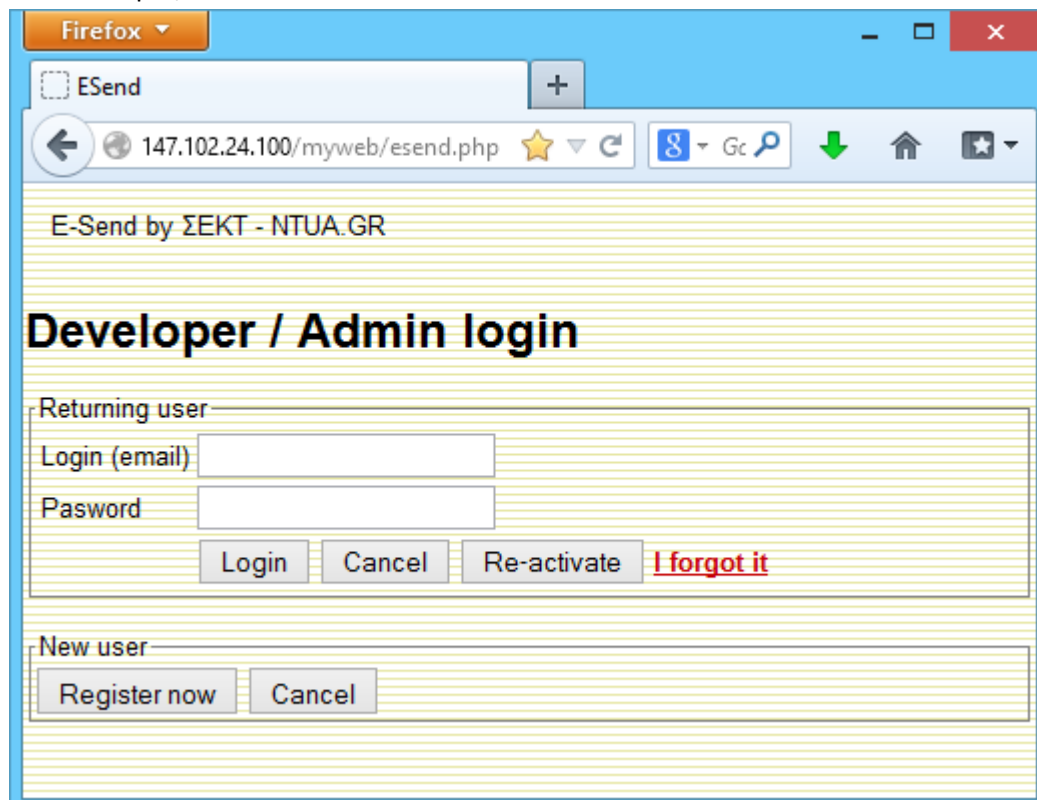
Register ECR on server

1. Enter WEB address to browser:

<http://147.102.24.100/myweb/esend.php>

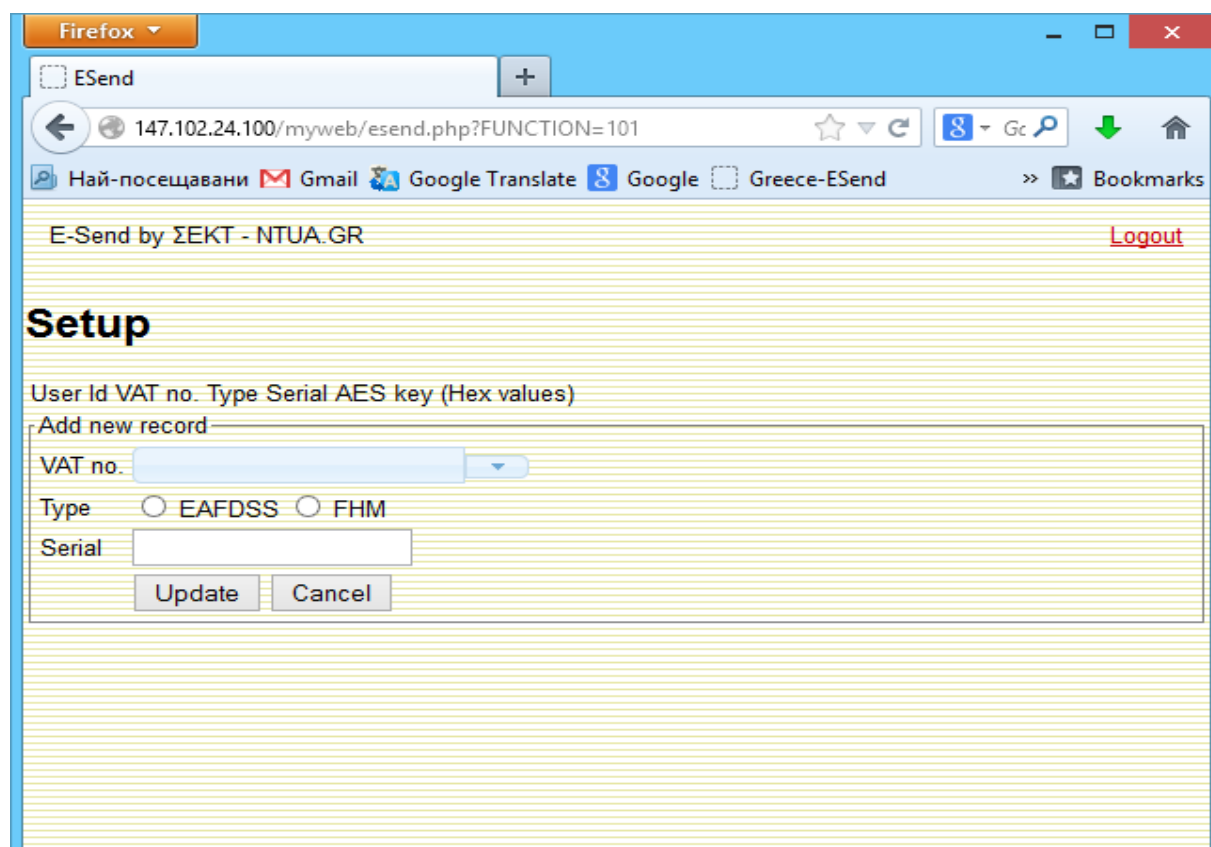
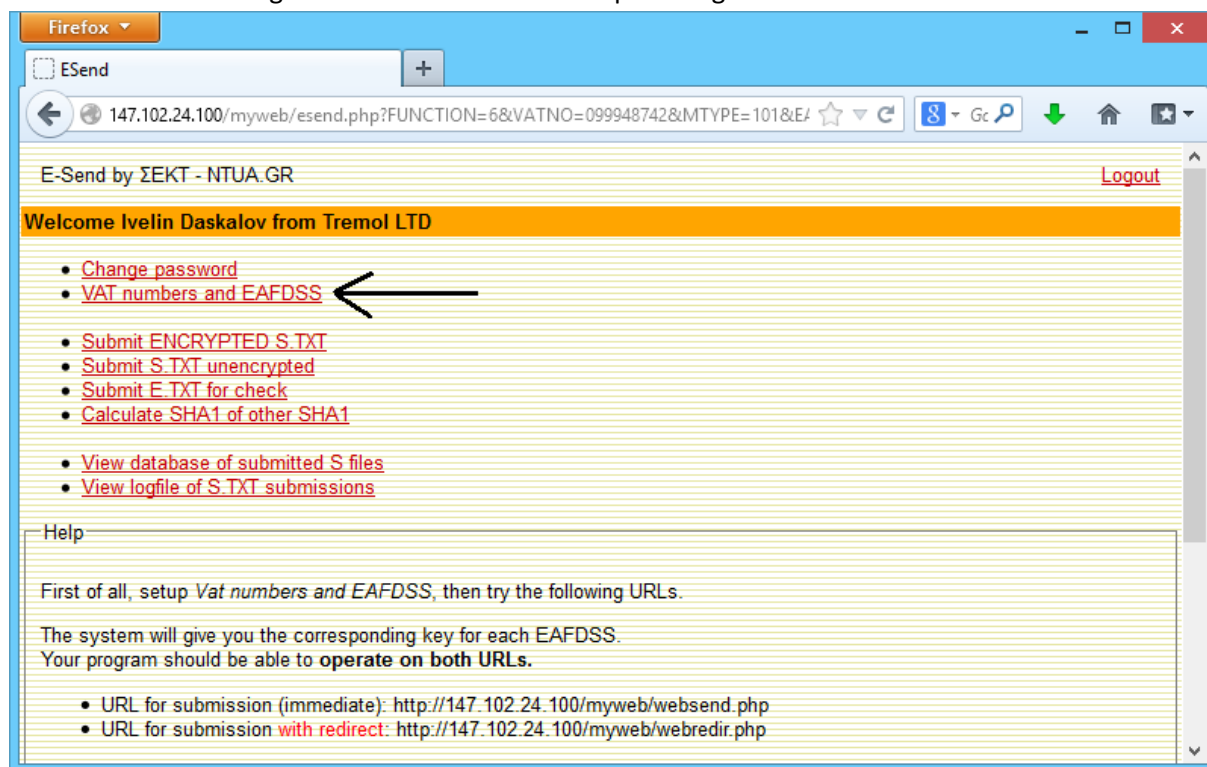


2. Press Developer/Admin button



Login: miro@tremol.bg
Pass: asdfgh

3. Set correct Login Name and Password and press Login button



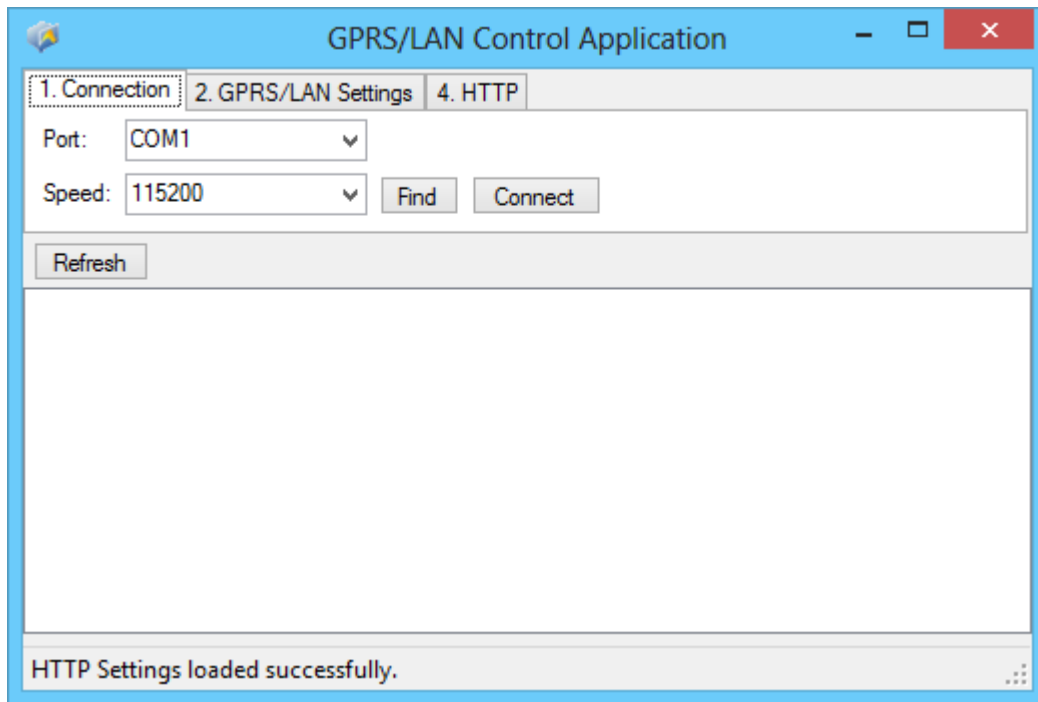
4. In "Add new record" section set **VAT number**, device **type** and **ECR serial number**;

5. Get generated AES key.

It will be used for server registration!!!

GPRS Control setting

1. ECR should be in Programming -> ΣΥΝΔΕΣΗ ME H/Y mode
2. Connect ECR with PC and start program ***GPRS_LAN_Settings.exe***



3. Select correct Port and Speed and press "Connect" button
4. GPRS Setting
 - a. **GPRS**
 - Select "**Use GPRS**" set APN and press Save button

GPRS/LAN Control Application

1. Connection 2. GPRS/LAN Settings 4. HTTP

☒ Use GPRS ☐ Use Lan

APN: tremol

user:

password:

IP: 0 0 0 0 ☒ Use DHCP

Netmask: 0 0 0 0

DNS: 0 0 0 0

Gateway: 0 0 0 0

Save Load

Refresh

HTTP Settings loaded successfully.

b. LAN

- Select "Use LAN", uncheck "Use DHCP" and enter LAN data; press Save button

GPRS/LAN Control Application

1. Connection 2. GPRS/LAN Settings 4. HTTP

☐ Use GPRS ☒ Use Lan

APN: tremol

user:

password:

IP: 0 0 0 0 ☐ Use DHCP

Netmask: 0 0 0 0

DNS: 0 0 0 0

Gateway: 0 0 0 0

Save Load

Refresh

HTTP Settings loaded successfully.

5. HTTP setting

- Enter Server address and press Save button

<http://147.102.24.100:80/myweb/websend.php>

GPRS/LAN Control Application

1. Connection 2. GPRS/LAN Settings 4. HTTP

Server address:

Registration settings

VAT number:

AES key:

GPRS Settings saved successfully.

GPRS/LAN Control Application

1. Connection 2. GPRS/LAN Settings 4. HTTP

Server address:

Registration settings

VAT number:

AES key:

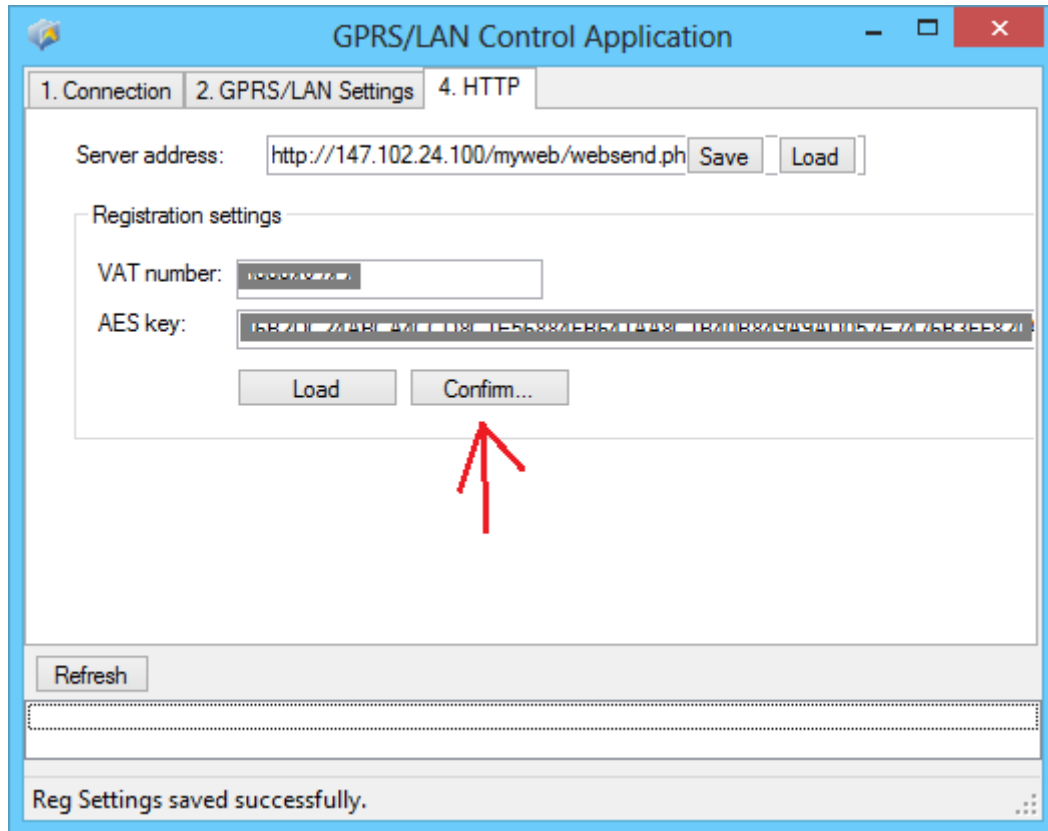
GPRS Settings saved successfully.

Note: For Registration settings need to be in SERVICE MODE (open ECR, put service jumper, go to COMMUNICATION mode)

1. Use "Load" to get VAT and Serial number or entering data manual.
2. After all data are correct set press "Save"

ECR print VAT number and AES key –button Save has renamed to "Confirm..". If all data are correctly

3. Press "Confirm.." button



The screenshot shows a Windows-style application window titled "GPRS/LAN Control Application". It has three tabs: "1. Connection", "2. GPRS/LAN Settings", and "4. HTTP". The "4. HTTP" tab is active. Inside the tab, there is a "Server address:" label followed by a text box containing "http://147.102.24.100/myweb/webseend.ph" and two buttons, "Save" and "Load". Below this is a "Registration settings" section. It contains a "VAT number:" label with a text box, and an "AES key:" label with a text box filled with a long hexadecimal string. Below the AES key text box are two buttons, "Load" and "Confirm...". A red arrow points to the "Confirm..." button. At the bottom of the window, there is a "Refresh" button and a status bar that says "Reg Settings saved successfully."