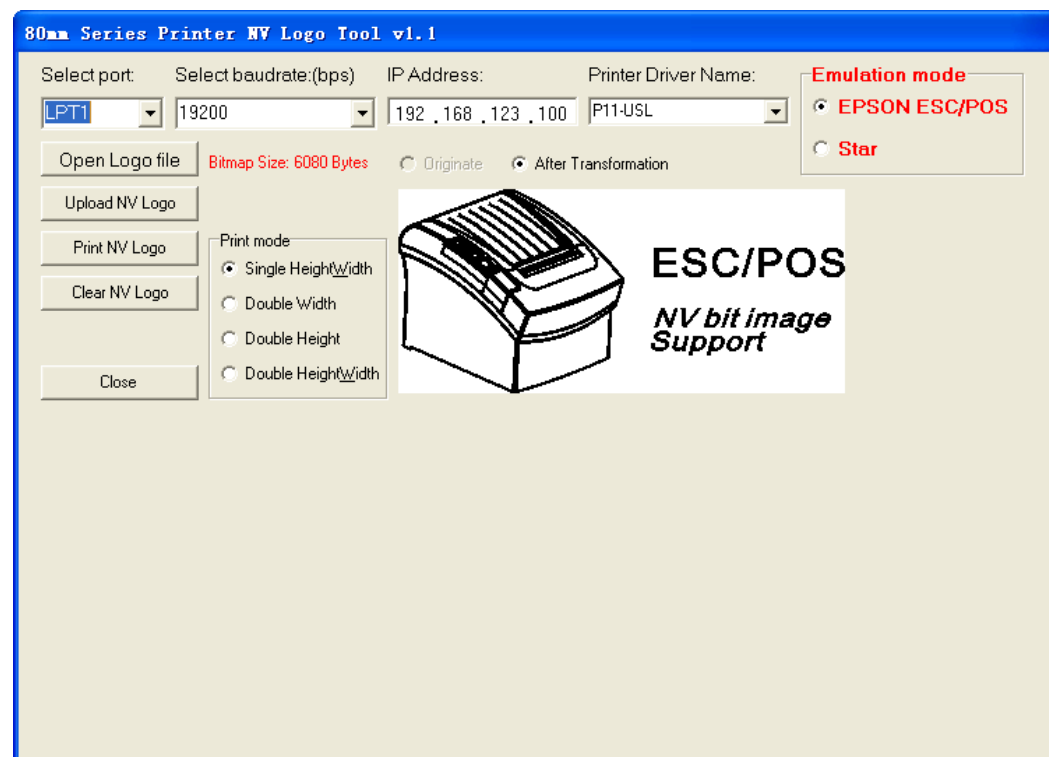
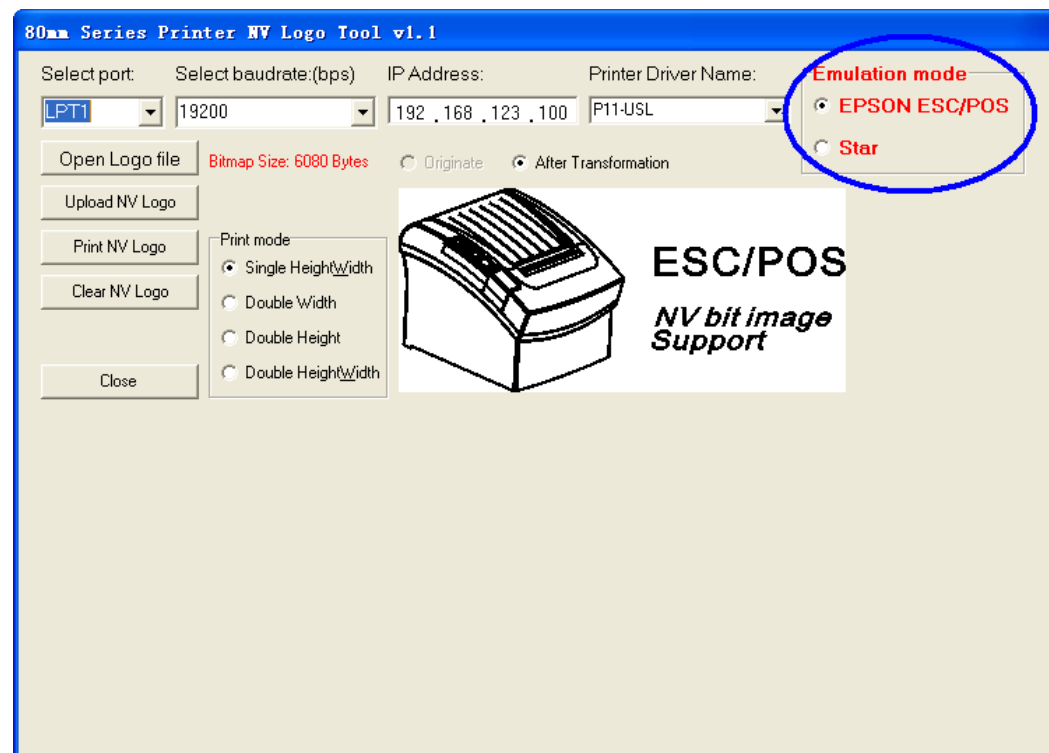


# Thermal printer NVLogo tool instruction

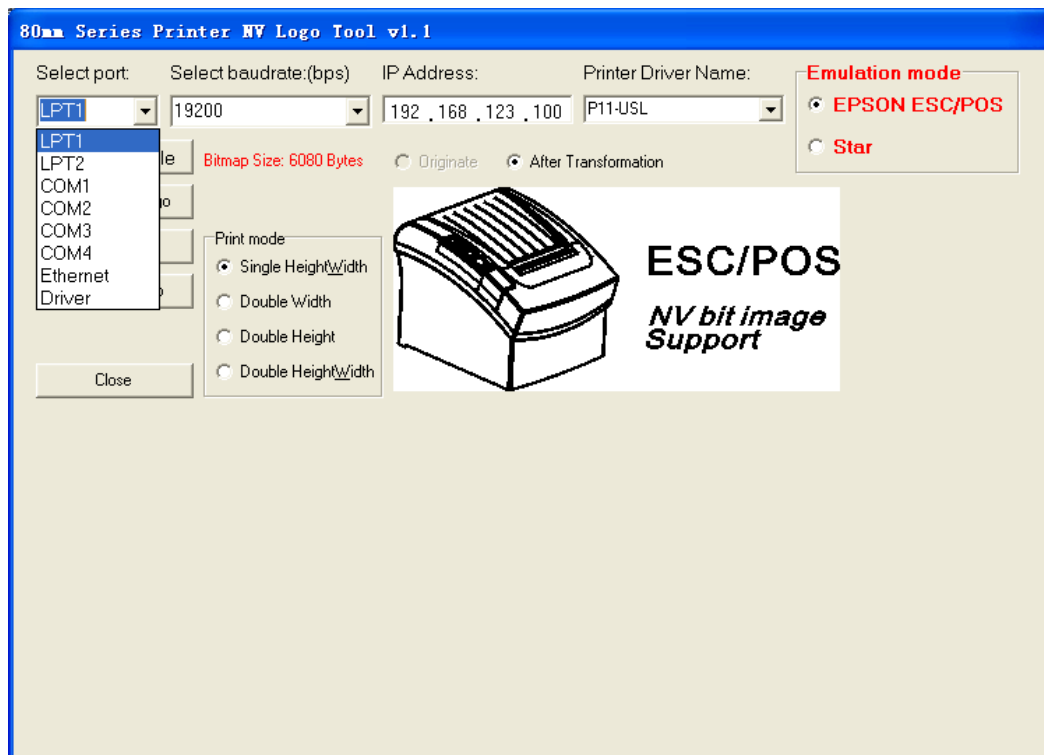
1. Please follow the step below to install the thermal printer NVLogo file “NVLogo.exe”



2. the “Emulation mode” at the upper right corner of screen , select “EPSON ESC/POS” or “Star” ,commonly select “ EPSON ESC/POS” ,like below picture show



3. Select the communication port of computer and printer



If it is “parallel”, select “LPT1” or “LPT2”

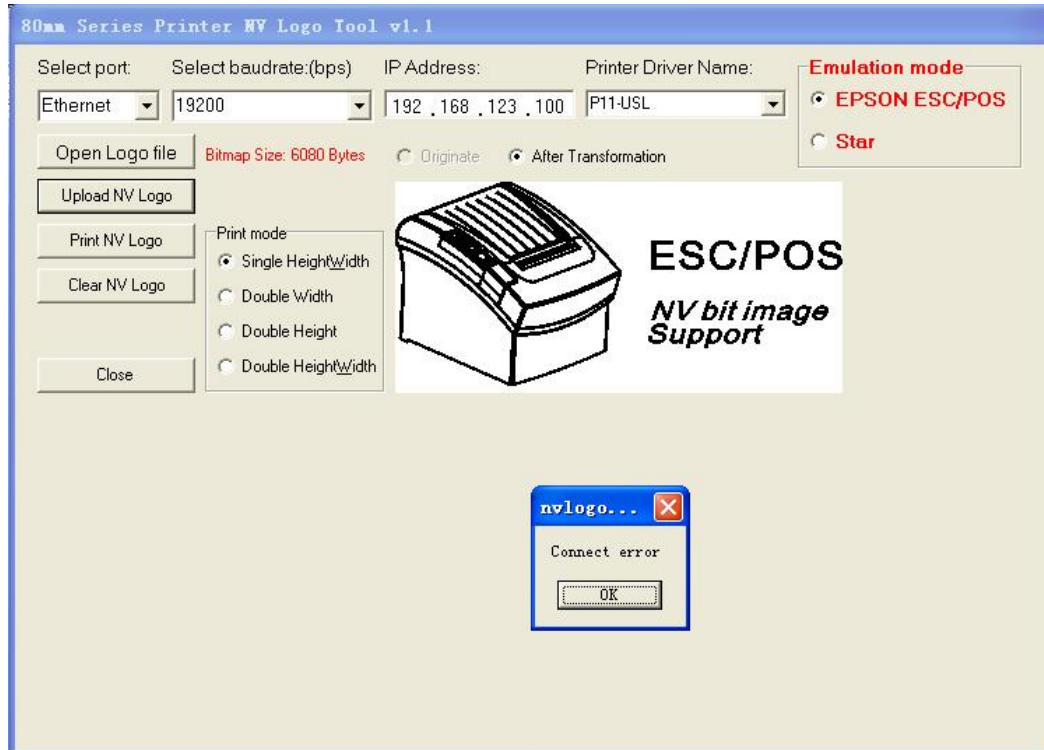
If it is “serial”, select “COM1”、“COM2”、“COM3” or “COM4” ,serial still should select the printer and compute communication “baud rate”(bps, bit/sec),as 19200

If it is Ethernet , select “ETHERNET” ,then below “IP Address” write in the IP address like 192.168.123.100

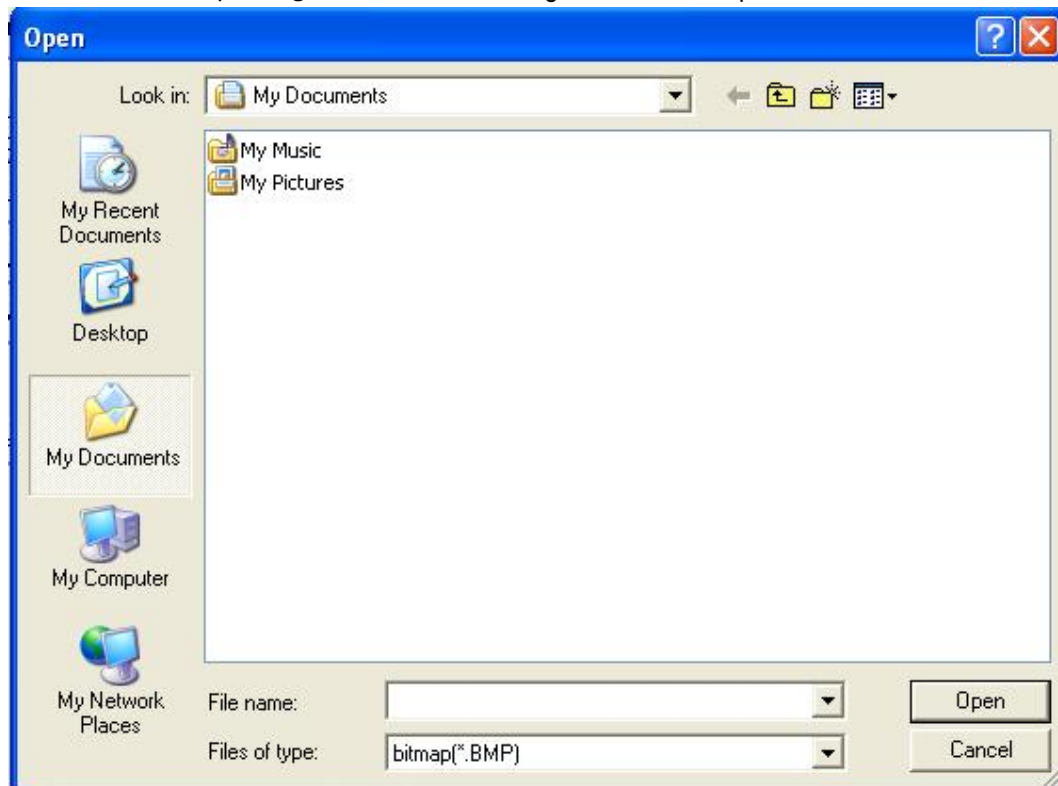
If it is Driver , select “Driver”,then select “Printer Driver Name”,This printer Driver’s port is the port that the printer is connected with the computer

Note: if select Ethernet communication interface, the first to confirm that the IP address of printer and the IP address of computer in the same network segment, the normal Unicom, otherwise it will error

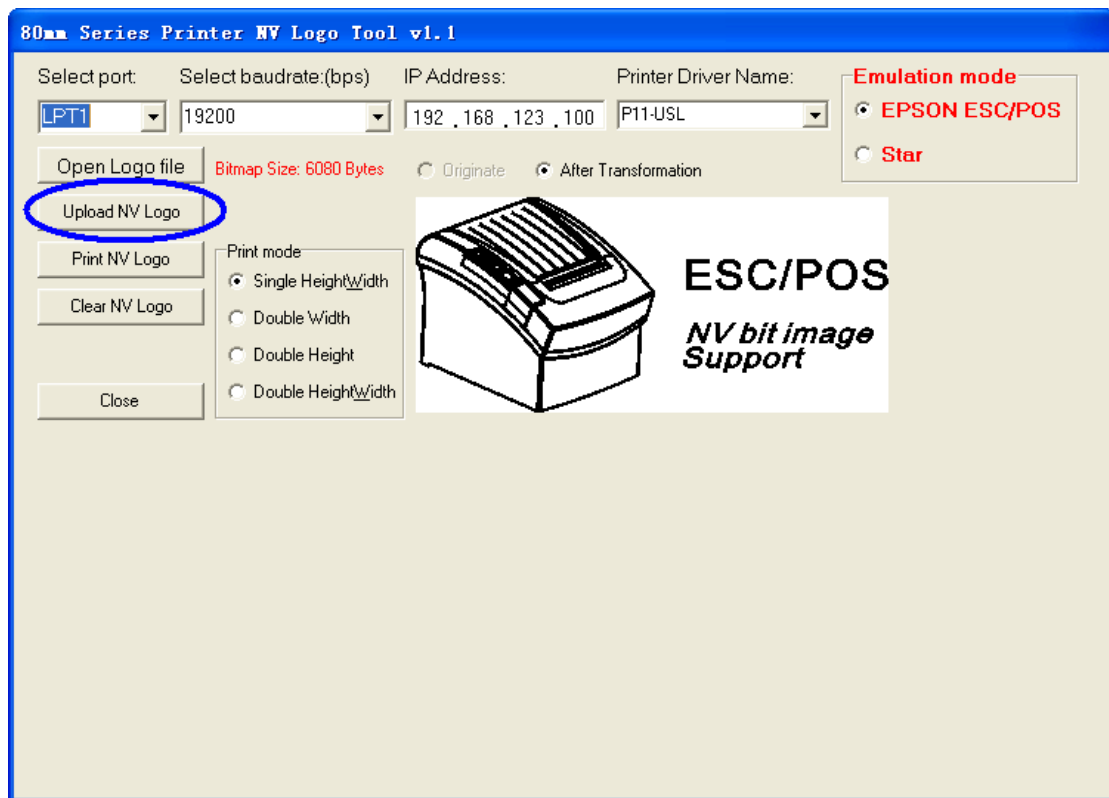
Like below picture show



4. click "Open Logo file ",select Logo file of "bmp" format, like below show



- 5.Click "Upload NV Logo", Logo NV can be downloaded to the printer memory (The printer off electricity without loss of data), download after the success of the printer will reset ( red lamp will light up, then put out ).



6. click "Print NV Logo", and select the " Print mode" (Single Height/width , double width, double height or double Height/width) to print NV Logo

7. Click “Clear NV Logo” can clear the Logo in NV Flash memory

8. Application software through to send instruction to the printer ( sixteen hex code ) 1C 70 01 00 ,then print out the NV Logo